

WINTER CAL – EXTENDING YOUR BLANKET

DESIGNED BY

MARJOLEIN KOOIMAN

In this part I will show you how to extend your blanket to a 5x5/6x6 square or to a rectangle blanket. I did not work such a blanket, but I will show you options for creating one.

In the next diagram I used letters for the top part of the squares.

A = Snow Flower

B = Snow Star

Empty = only TRS (for the border of the blanket)

The squares in **yellow** are included in this file. All the other squares are in the previous parts of the Winter CAL.

- 1 Corner Square -> Week 2
- 2 Border Square -> Week 1
- 3 Middle Square -> Week 3
- 4 **New Extra Middle Square**
- 5 **New Extra Centre Square**

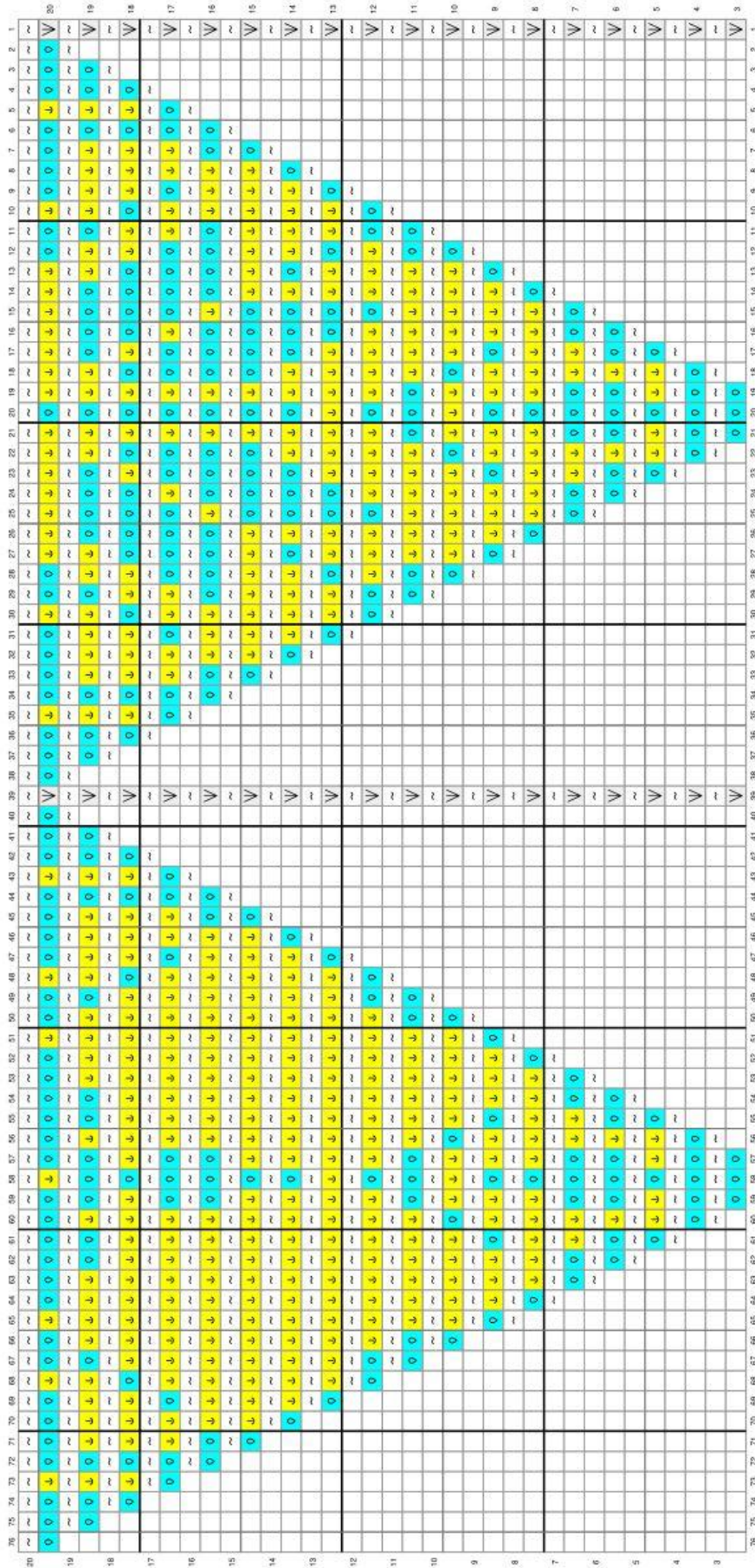
6X6 SQUARE BLANKET

	1	A	A	2	A	A	2	A	A	2	A	A	2	A	A	1
	A			B			B			B			B		A	
	A			B			B			B			B		A	
	2	B	B	3	A	A	4	A	A	4	A	A	3	B	B	2
	A			A			B			B			A		A	
	A			A			B			B			A		A	
	2	B	B	4	B	B	3	A	A	3	B	B	4	B	B	2
	A			A			A			A			A		A	
	A			A			A			A			A		A	
	2	B	B	4	B	B	3	A	A	3	B	B	4	B	B	2
	A			A			B			B			A		A	
	A			A			B			B			A		A	
	2	B	B	3	A	A	4	A	A	4	A	A	3	B	B	2
	A			B			B			B			B		A	
	A			B			B			B			B		A	
	1	A	A	2	A	A	2	A	A	2	A	A	2	A	A	1

This is what you will need to make for this blanket:

Square Number	Name of Square	Number of Squares
1	Corner	4
2	Border	16
3	Middle square	8
4	Extra Middle square	8

On the next page you will find the pattern for the Extra Middle Square (nr 4). It will show you only 2 sides. You need to crochet the chart 2 times for 1 square. You can print the chart twice to create a complete chart of all 4 sides.



- NO STITCH
- ▽ Corner (TKS, YO, TKS)
- TKS
- ← TRS
- ~ Return

	39	38	37	36	35	34	33	32	31	30	29	28	27	26	25	24	23	22	21	20	19	18	17	16	15	14	13	12	11	10	9	8	7	6	5	4	3	2	1				
20	~	~	~	~	~	~	~	~	~	~	~	~	~	~	~	~	~	~	~	~	~	~	~	~	~	~	~	~	~	~	~	~	~	~	~	~	~	~	~	~			
19	~	~	~	~	~	~	~	~	~	~	~	~	~	~	~	~	~	~	~	~	~	~	~	~	~	~	~	~	~	~	~	~	~	~	~	~	~	~	~	~	~	~	
18	~	~	~	~	~	~	~	~	~	~	~	~	~	~	~	~	~	~	~	~	~	~	~	~	~	~	~	~	~	~	~	~	~	~	~	~	~	~	~	~	~	~	
17	~	~	~	~	~	~	~	~	~	~	~	~	~	~	~	~	~	~	~	~	~	~	~	~	~	~	~	~	~	~	~	~	~	~	~	~	~	~	~	~	~	~	
16	~	~	~	~	~	~	~	~	~	~	~	~	~	~	~	~	~	~	~	~	~	~	~	~	~	~	~	~	~	~	~	~	~	~	~	~	~	~	~	~	~	~	
15	~	~	~	~	~	~	~	~	~	~	~	~	~	~	~	~	~	~	~	~	~	~	~	~	~	~	~	~	~	~	~	~	~	~	~	~	~	~	~	~	~	~	
14	~	~	~	~	~	~	~	~	~	~	~	~	~	~	~	~	~	~	~	~	~	~	~	~	~	~	~	~	~	~	~	~	~	~	~	~	~	~	~	~	~	~	
13	~	~	~	~	~	~	~	~	~	~	~	~	~	~	~	~	~	~	~	~	~	~	~	~	~	~	~	~	~	~	~	~	~	~	~	~	~	~	~	~	~	~	
12	~	~	~	~	~	~	~	~	~	~	~	~	~	~	~	~	~	~	~	~	~	~	~	~	~	~	~	~	~	~	~	~	~	~	~	~	~	~	~	~	~	~	
11	~	~	~	~	~	~	~	~	~	~	~	~	~	~	~	~	~	~	~	~	~	~	~	~	~	~	~	~	~	~	~	~	~	~	~	~	~	~	~	~	~	~	
10	~	~	~	~	~	~	~	~	~	~	~	~	~	~	~	~	~	~	~	~	~	~	~	~	~	~	~	~	~	~	~	~	~	~	~	~	~	~	~	~	~	~	
9	~	~	~	~	~	~	~	~	~	~	~	~	~	~	~	~	~	~	~	~	~	~	~	~	~	~	~	~	~	~	~	~	~	~	~	~	~	~	~	~	~	~	
8	~	~	~	~	~	~	~	~	~	~	~	~	~	~	~	~	~	~	~	~	~	~	~	~	~	~	~	~	~	~	~	~	~	~	~	~	~	~	~	~	~	~	~
7	~	~	~	~	~	~	~	~	~	~	~	~	~	~	~	~	~	~	~	~	~	~	~	~	~	~	~	~	~	~	~	~	~	~	~	~	~	~	~	~	~	~	~
6	~	~	~	~	~	~	~	~	~	~	~	~	~	~	~	~	~	~	~	~	~	~	~	~	~	~	~	~	~	~	~	~	~	~	~	~	~	~	~	~	~	~	~
5	~	~	~	~	~	~	~	~	~	~	~	~	~	~	~	~	~	~	~	~	~	~	~	~	~	~	~	~	~	~	~	~	~	~	~	~	~	~	~	~	~	~	~
4	~	~	~	~	~	~	~	~	~	~	~	~	~	~	~	~	~	~	~	~	~	~	~	~	~	~	~	~	~	~	~	~	~	~	~	~	~	~	~	~	~	~	~
3	~	~	~	~	~	~	~	~	~	~	~	~	~	~	~	~	~	~	~	~	~	~	~	~	~	~	~	~	~	~	~	~	~	~	~	~	~	~	~	~	~	~	~

4X5 AND 4X6 RECTANGLE BLANKETS

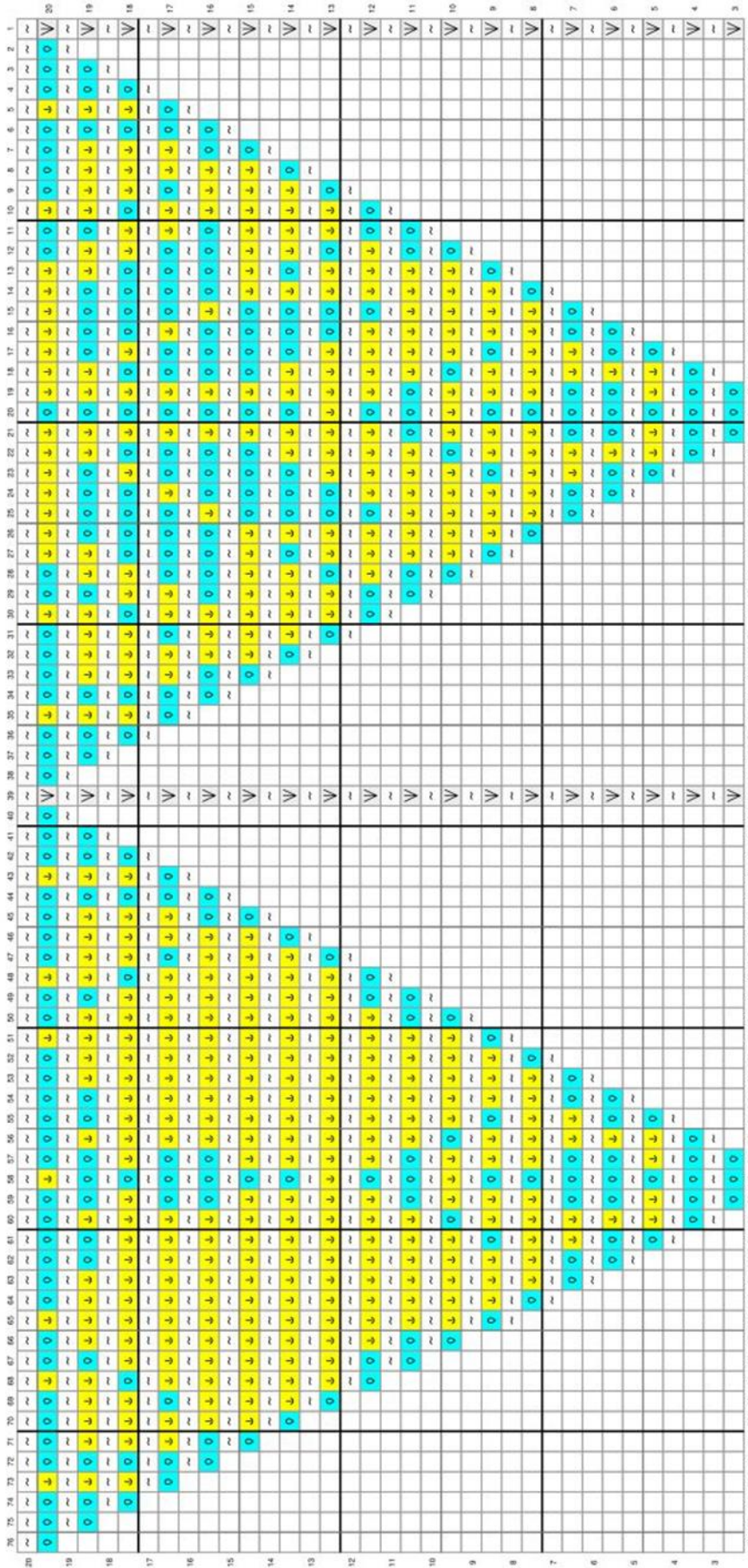
	1	A	A	2	A	A	2	A	A	1
	A			B			B			A
A			B			B				A
	2	B	B	3	A	A	3	B	B	2
	A			A			A			A
A			A			A				A
	2	B	B	4	B	B	4	B	B	2
	A			A			A			A
A			A			A				A
	2	B	B	3	A	A	3	B	B	2
	A			B			B			A
A			B			B				A
	1	A	A	2	A	A	2	A	A	1

	1	A	A	2	A	A	2	A	A	1
	A			B			B			A
A			B			B				A
	2	B	B	3	A	A	3	B	B	2
	A			A			A			A
A			A			A				A
	2	B	B	4	B	B	4	B	B	2
	A			A			A			A
A			A			A				A
	2	B	B	4	B	B	4	B	B	2
	A			A			A			A
A			A			A				A
	2	B	B	3	A	A	3	B	B	2
	A			B			B			A
A			B			B				A
	1	A	A	2	A	A	2	A	A	1

This is what you will need to make for these blankets:

Square Number	Name of Square	Nr of squares 4x5 blanket	Nr of squares 4x6 blanket
1	Corner	4	4
2	Border	10	12
3	Middle square	4	4
4	Extra middle square	2	

On the next page you will find the pattern for the Extra Middle Square (nr 4). It will show you only 2 sides. You need to crochet the chart 2 times for 1 square. You can print the chart twice to create a complete chart of all 4 sides.



- NO STITCH
- V Corner (TKS, YO, TKS)
- TKS
- ← TRS
- ~ Return